



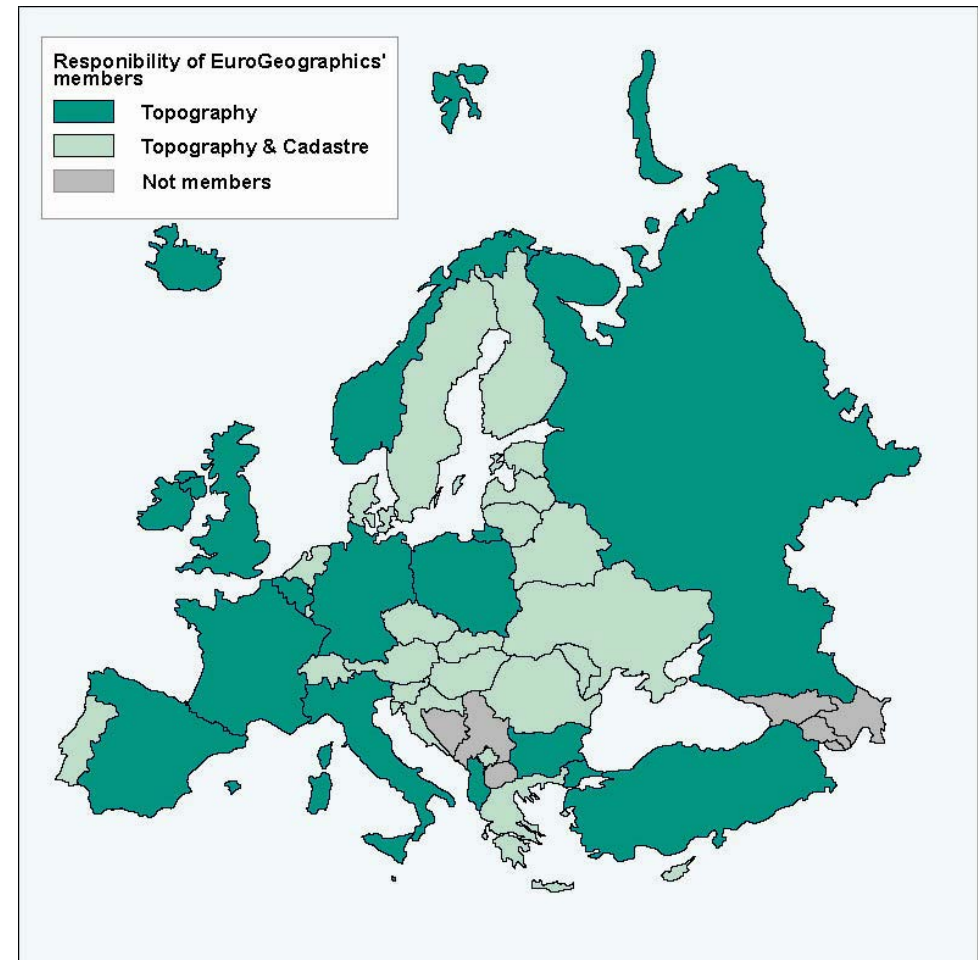
EuroGeographics, the (common) Reference Information reference group

Claude Luzet, Programme Manager
EuroGeographics Head Office; Paris



EuroGeographics

- An association of the National Mapping and Cadastral Agencies (NMCAs) in Europe
- Started in 2001
- Merger of CERCO (since 1979) & MEGRIN (since 1995)
- 43 organisations from 40 countries





NMCAs' common mission

- To provide Reference Information (nationally) for better governance, economic development and the citizen's needs

EuroGeographics mission

- To extend its Members' common mission by facilitating the access and use of national data for pan-European and cross-border applications

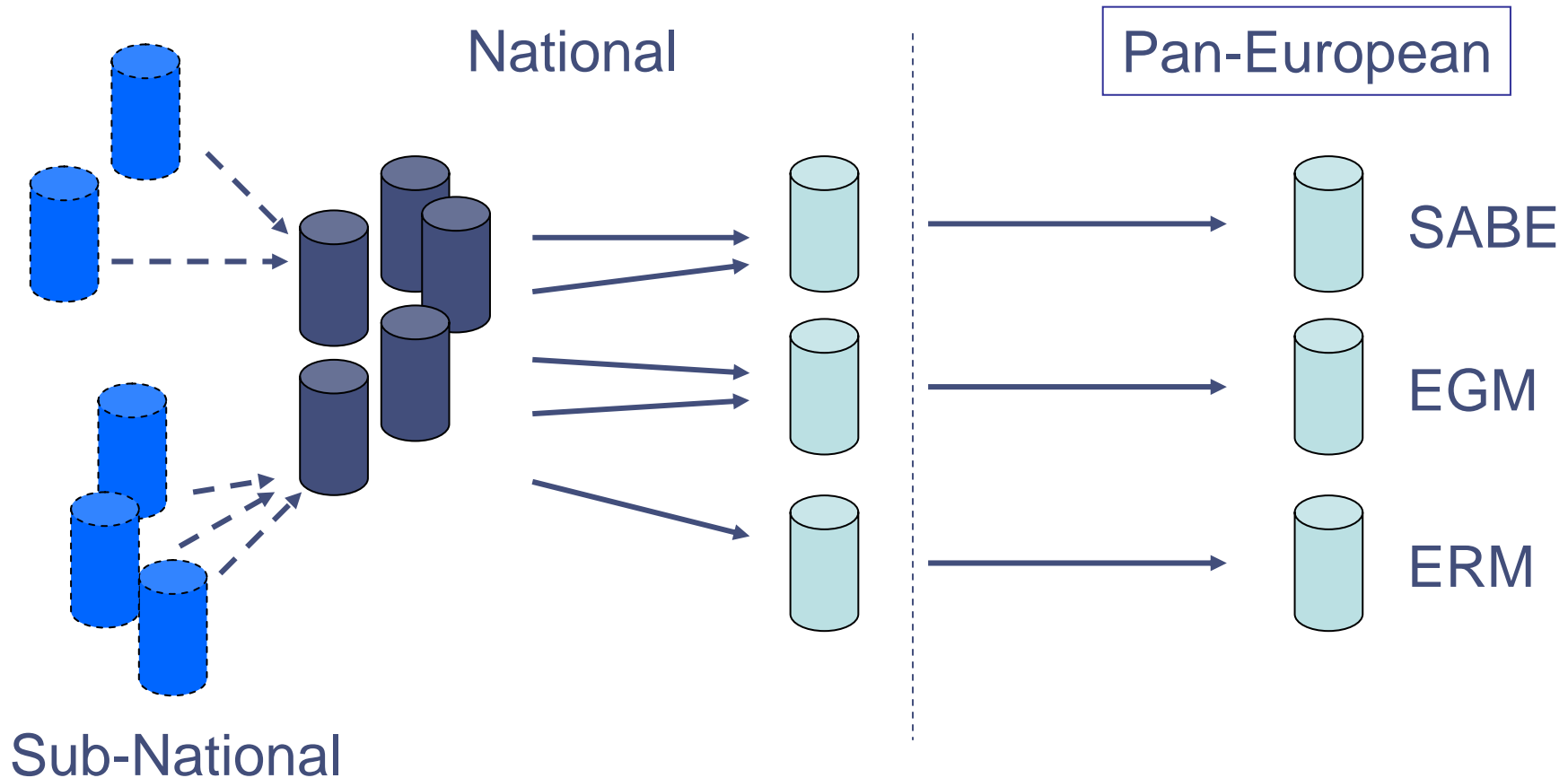


Building the European spatial data infrastructure

- 3 approaches:
 - Pragmatic: by producing harmonised datasets using NMCA data
 - SABE, EuroGlobalMap (EGM), EuroRegionalMap (ERM)
 - Strategic: EuroSpec
 - ‘Programme of work’ to use NMCA resources to produce and make available European datasets in decentralised and interoperable way
 - Includes projects such as EuroRoadS, EuroGeoNames, RISE, etc.
 - Political: active member of INSPIRE project of the European Commission

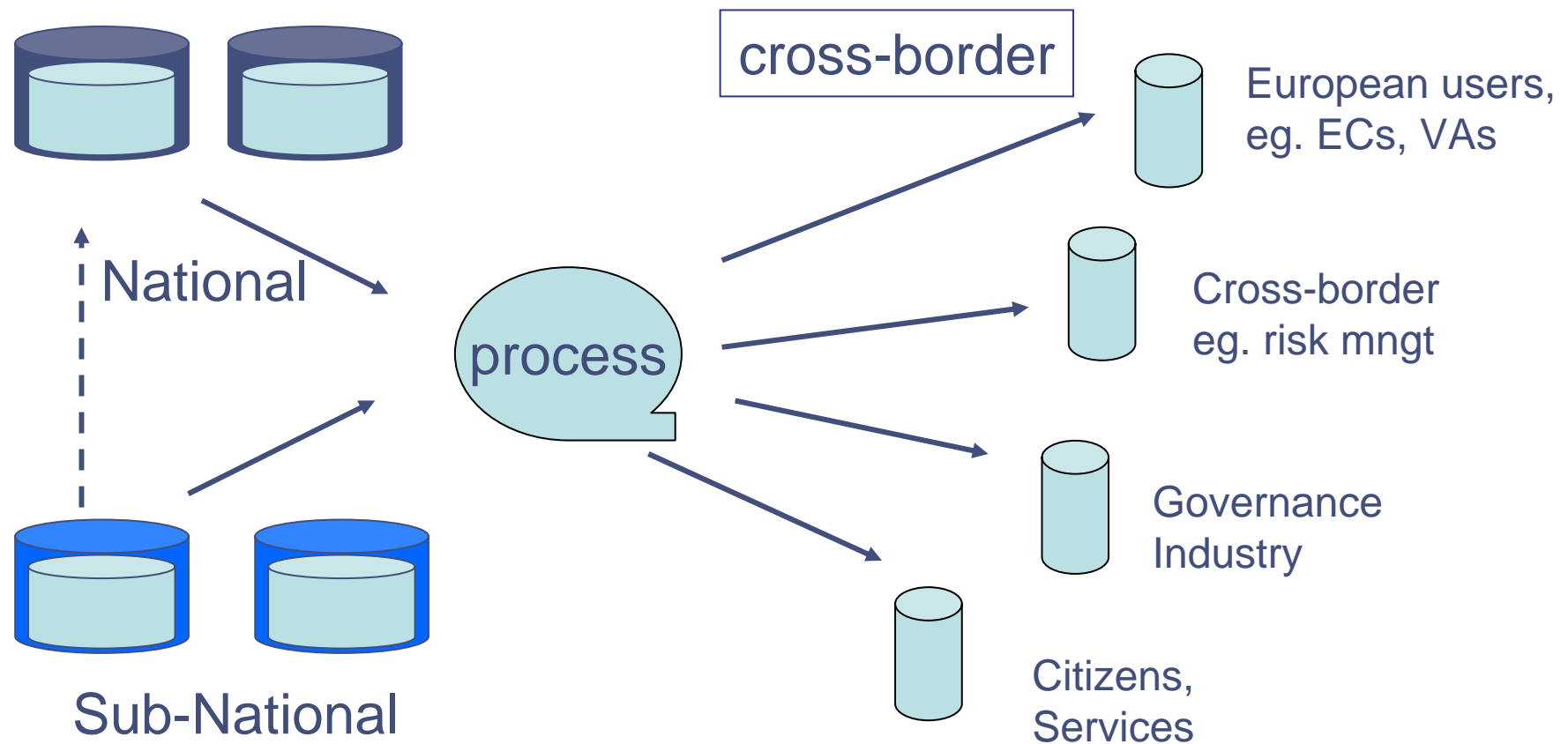


From centralised delivery of reference information



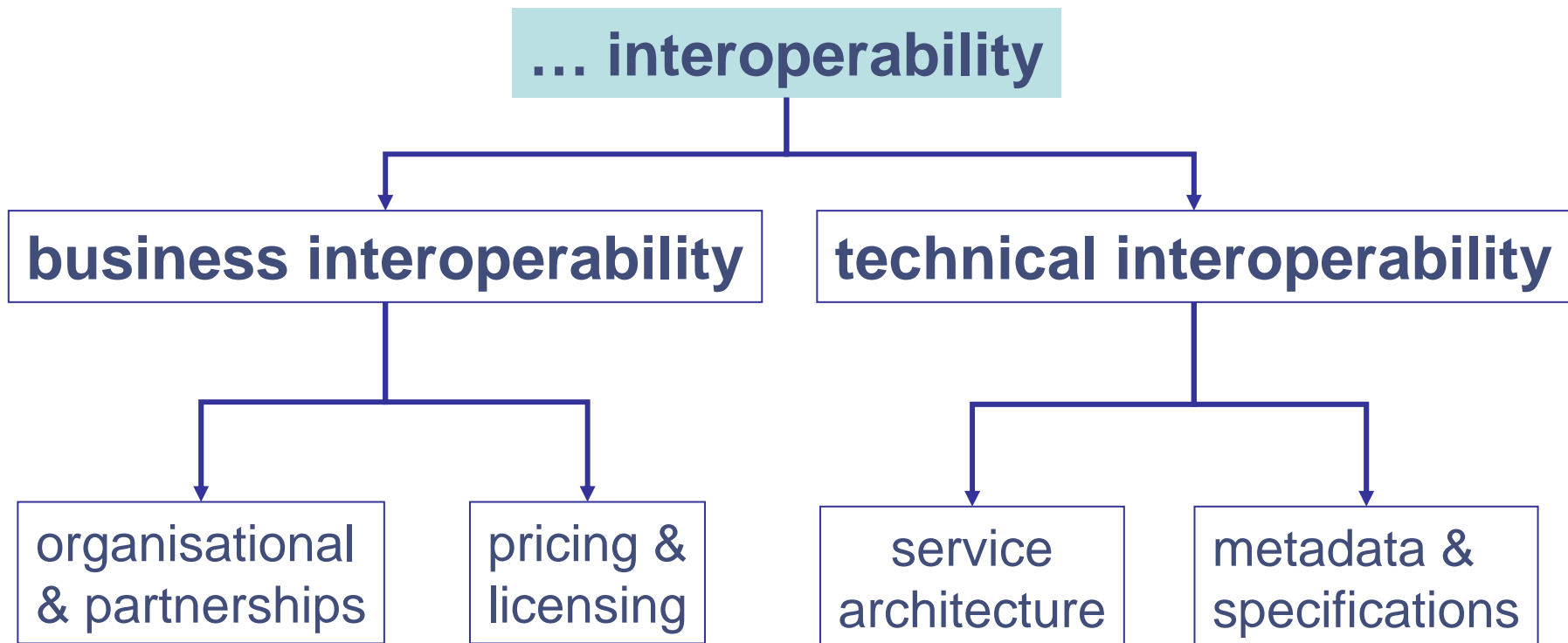


..... to decentralised delivery of reference information



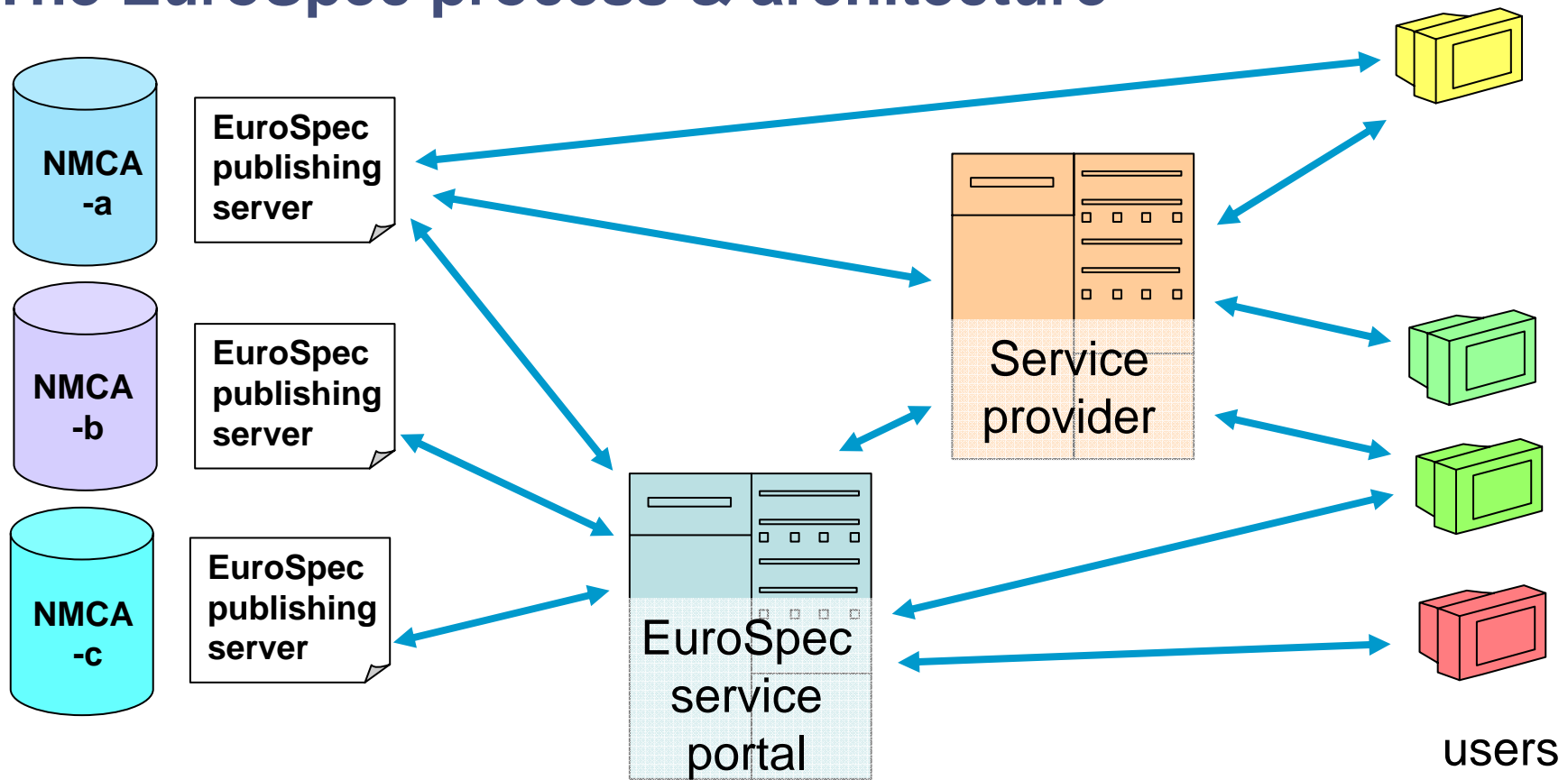


EuroSpec : from harmonisation to ...



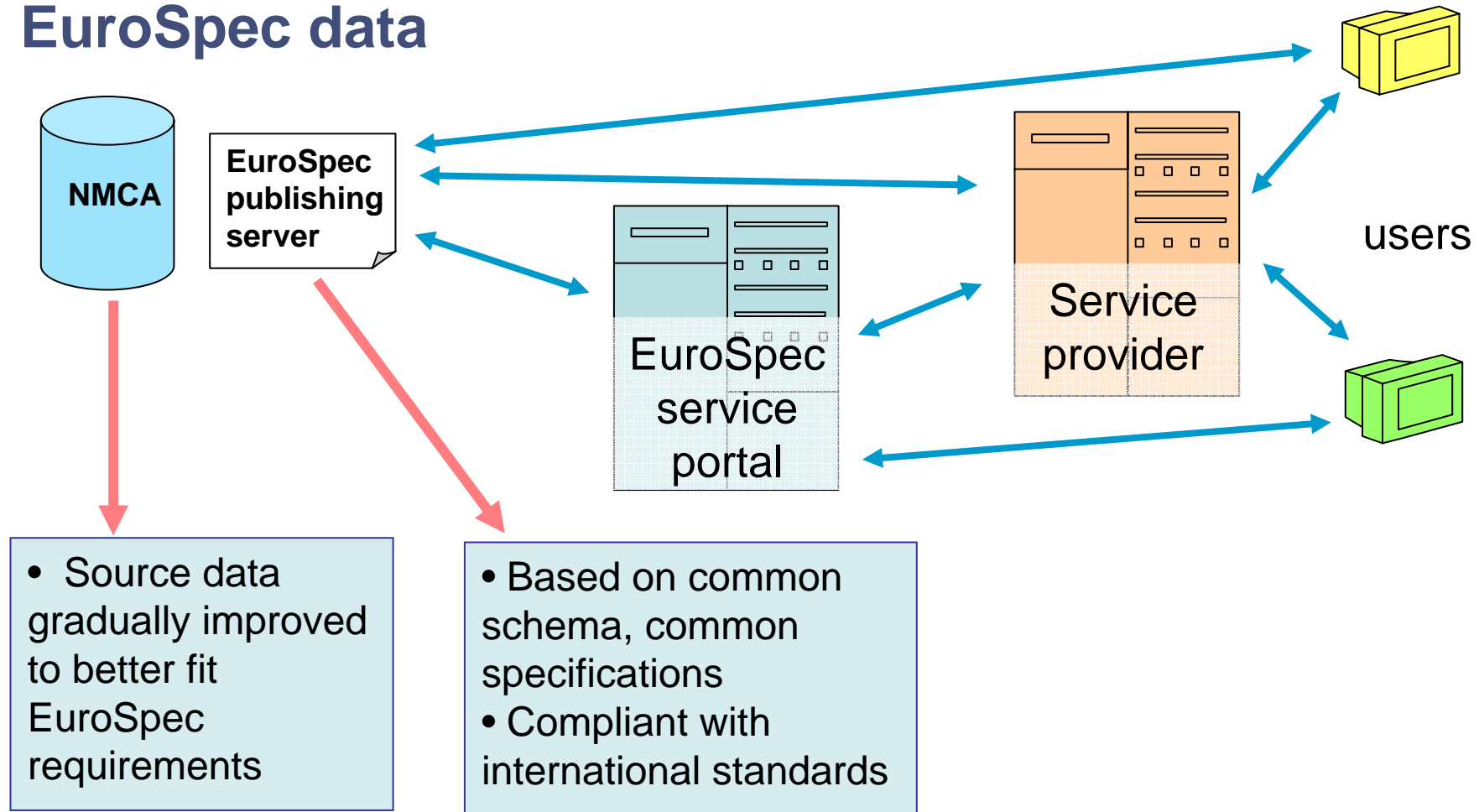


The EuroSpec process & architecture



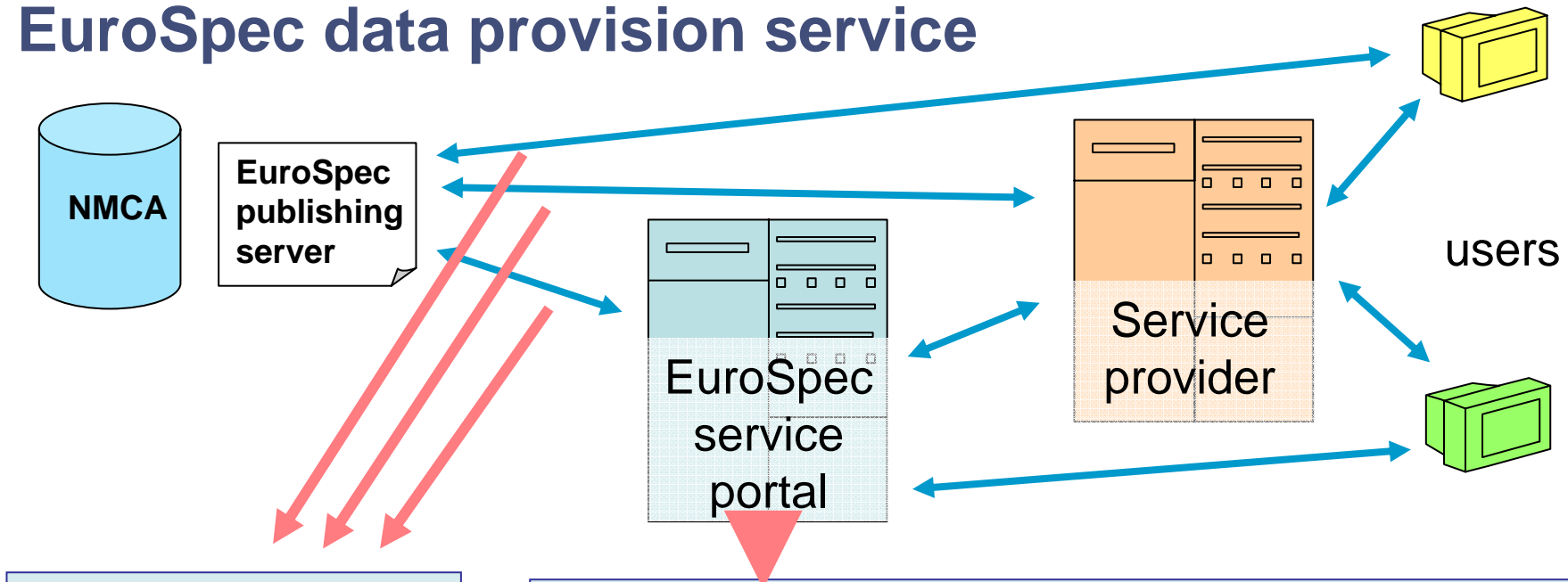


EuroSpec data





EuroSpec data provision service



- Interoperable data available directly to end users, or through service providers, or the EuroSpec portal

- Helpdesk for EuroSpec data and its use
- Hosts additional data not available nationally
- Hosts pan-European integrated products
- Supports pan-European & cross-border licensing
- Additional services (metadata, transformations, etc.)

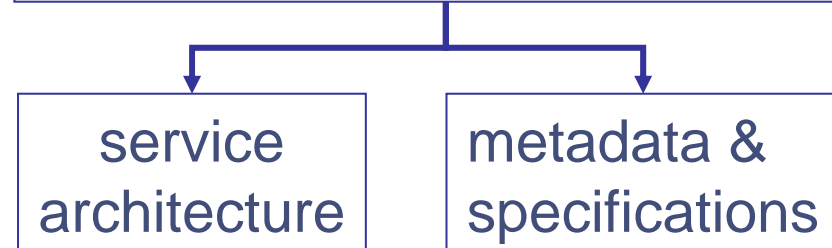


EuroSpec and ...

EuroSpec business interoperability



EuroSpec technical interoperability



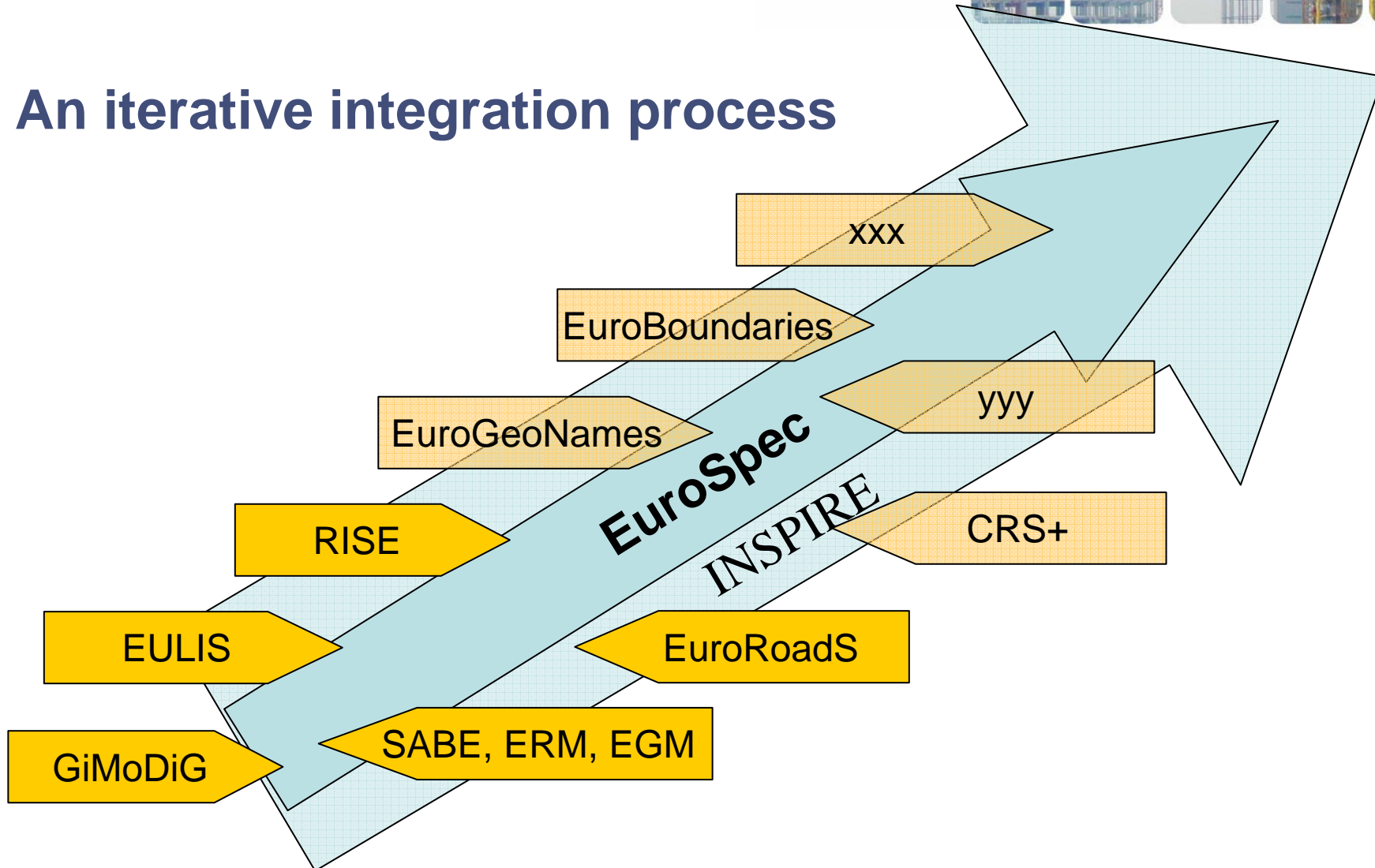
- agreements on sharing, access and use;
- coordination and monitoring mechanisms;
- processes and procedures.

- metadata;
- spatial data sets;
- network services;

... the 6 INSPIRE infrastructure components



An iterative integration process



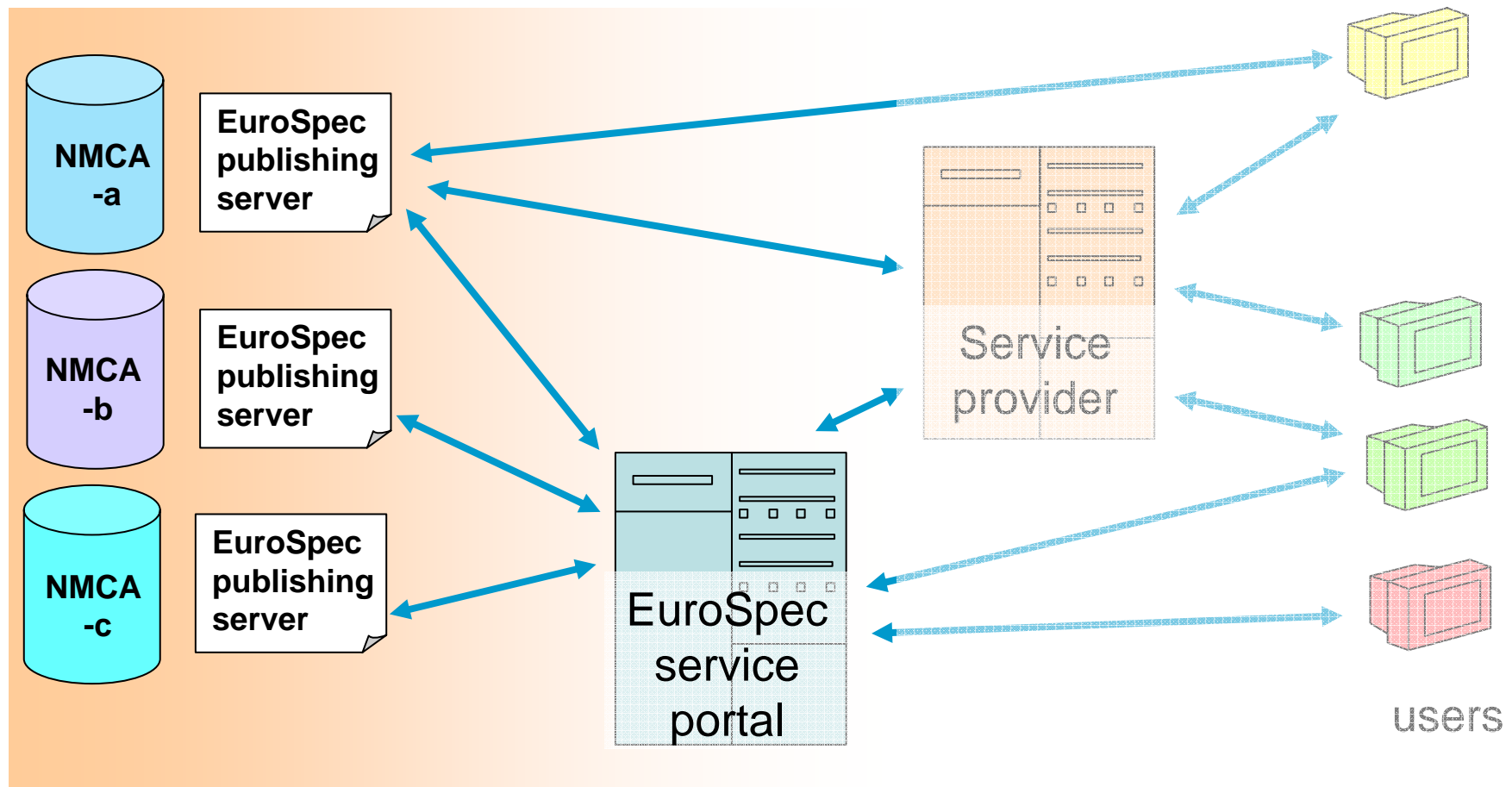


Conclusion

- EuroSpec : a strategic framework for
 - pan-European and cross-sector interoperability,
 - in line with the INSPIRE working programme
- EuroGeographics : the association of the national custodians
 - of the road network reference information
 - a sustainable organisation for long-term integrated implementation of a major component of the pan-European Road Data Solution



EuroGeographics as a Reference Group for EuroRoadS





- Questions ? Comments

Thank you!